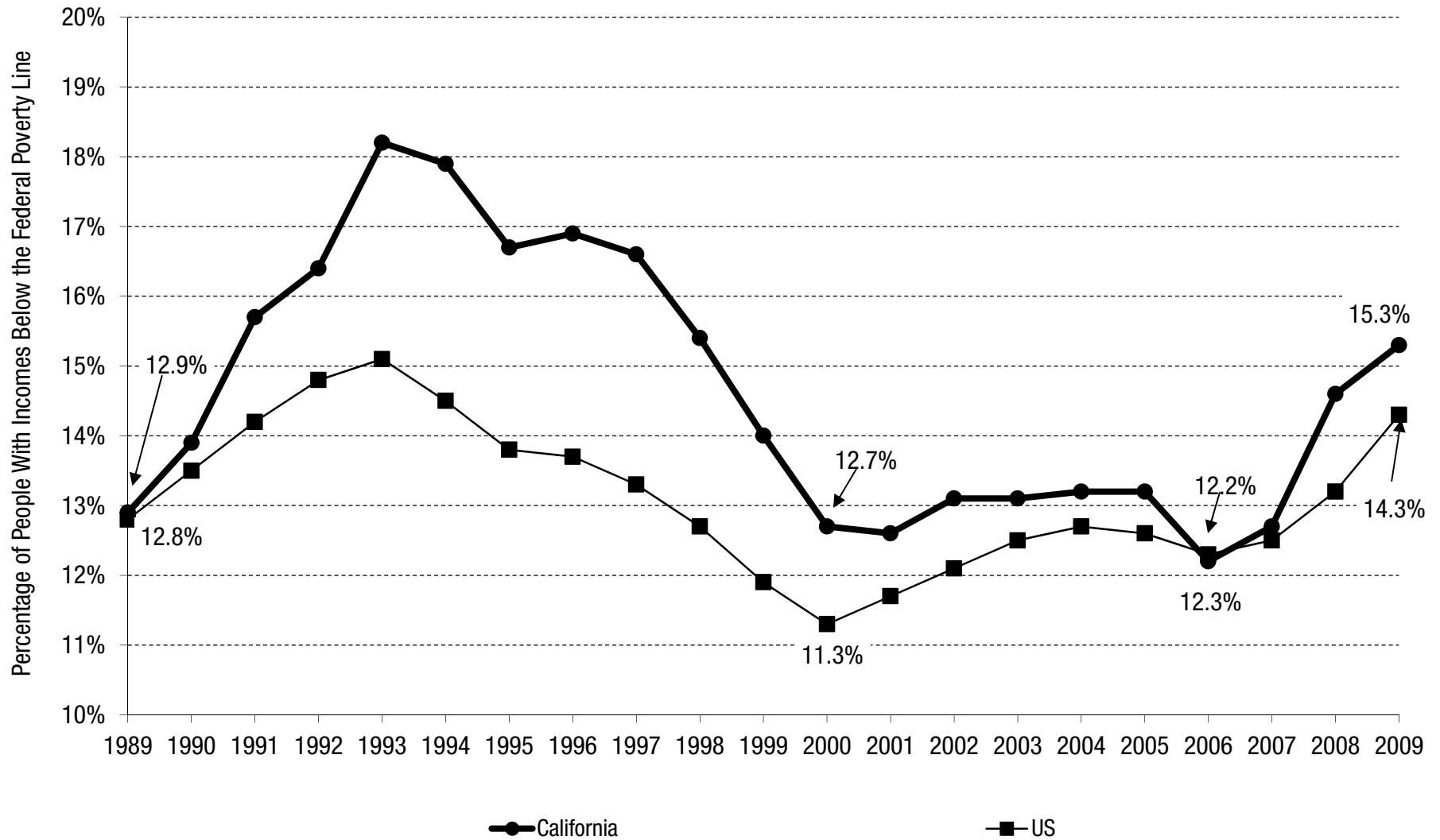
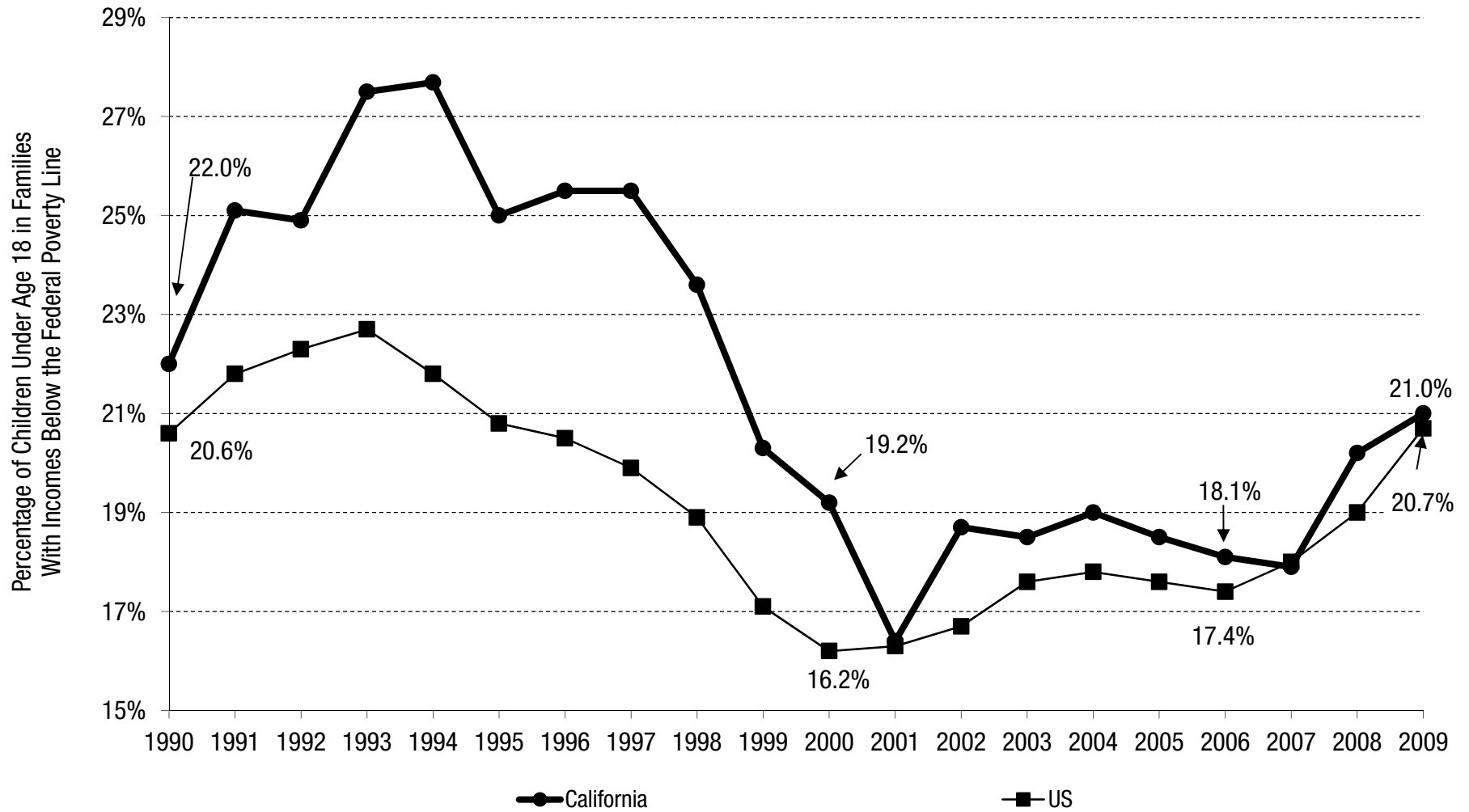


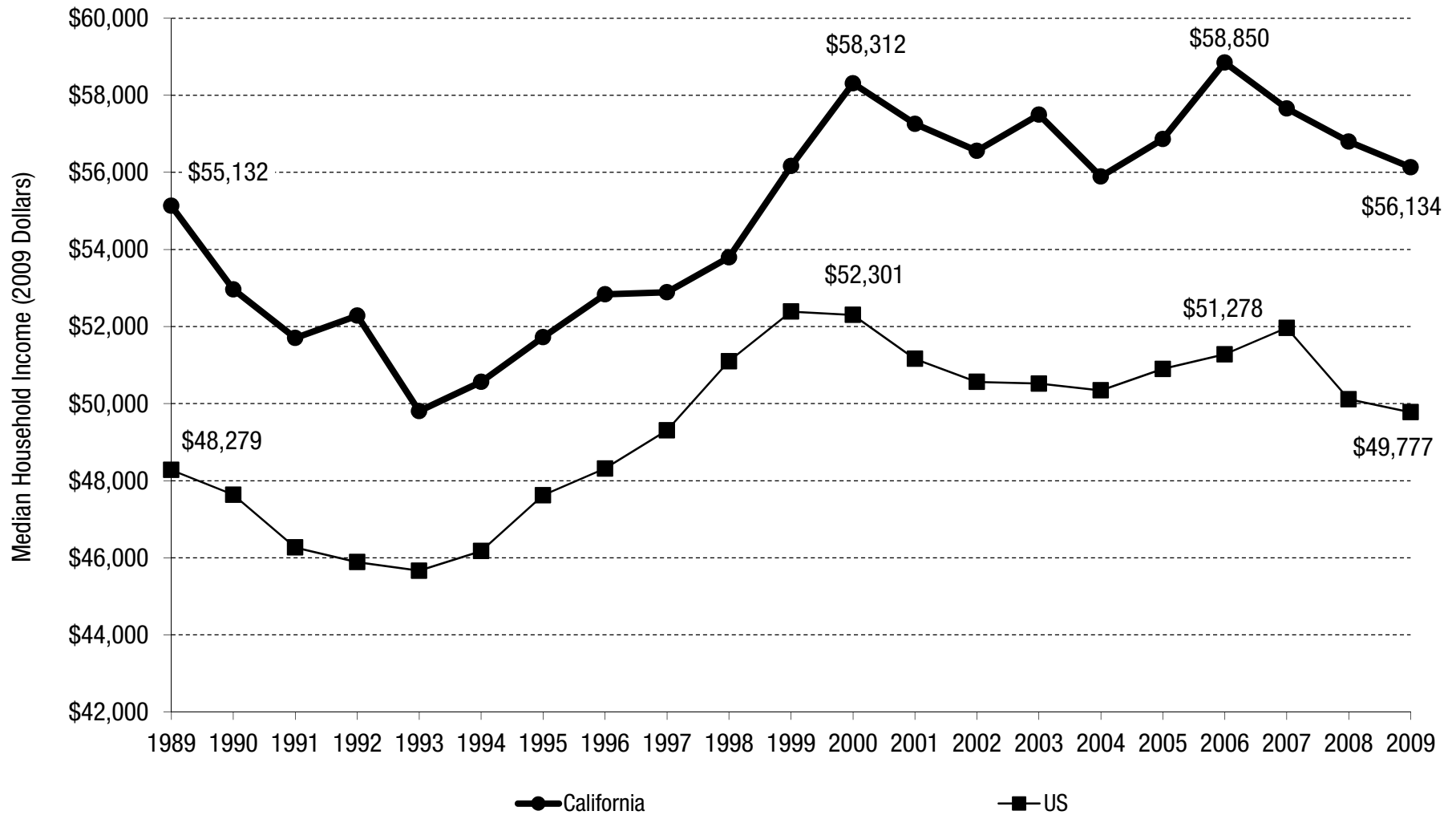
## California's Poverty Rate Increased Significantly Between 2006 and 2009



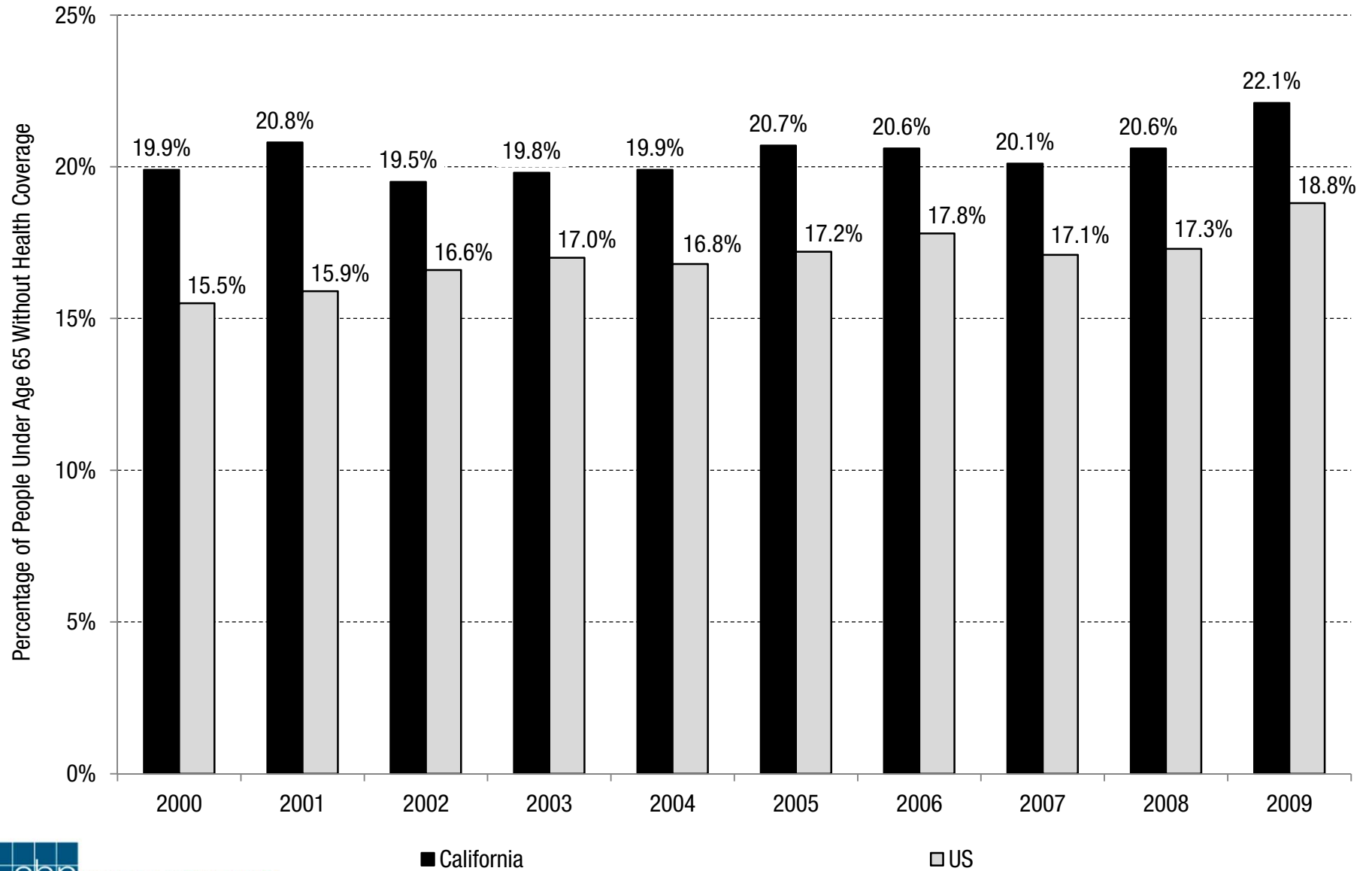
## California's Child Poverty Rate Increased Significantly Between 2006 and 2009



## California's Median Household Income Has Lost Purchasing Power Since 2006



## More Than One Out of Five Californians Under Age 65 Lack Health Coverage



## The Share of Californians Under Age 65 With Job-Based Health Coverage Has Declined Significantly Since 2006

